

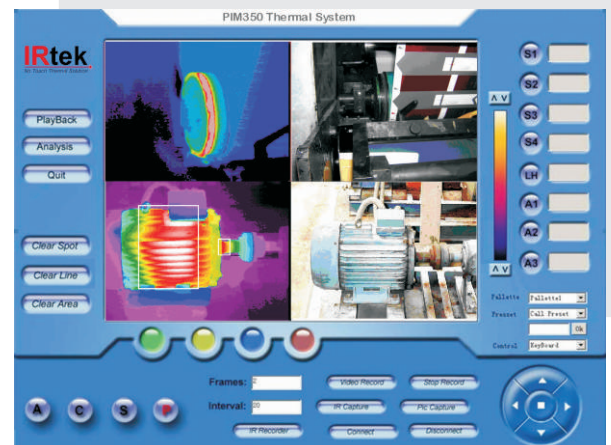
# PIM350 *Online Process Thermal Imaging Monitoring*



Application:

- Cement Kiln
- Tobacco Industry
- Flat Glass Manufacturing (Annealing Process)
- Metallurgy Industry
- Computer Board Industry
- Food Processing Industry
- Material Handling

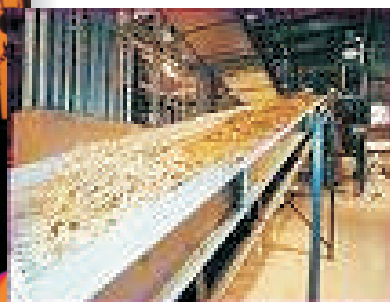
It's a light weight, rugged and compact thermal camera with fully configured output functionality allows the PIM350 either to be integrated quickly and easily in your control systems or to be set up as a stand-alone system. Real time color alarm offer. The PIM350 is available in RJ-45 Ethernet models that are ideal for individual or network multiple camera installations. PIM350 comes with software that you can use computer to control the camera by this software.



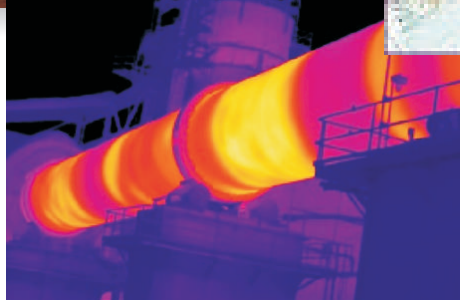
*Online digital interfacing software*



*Metallurgy industry*



*Tobacco industry*



*Cement Kiln*

[www.irtek-temp.com](http://www.irtek-temp.com)

**IRtek**<sup>®</sup>  
No Touch Thermal Solution

## Ordering information

PIM350 is sold exclusively through authorized thermography distributors. To request a demonstration or order a PIM350, email to [sales@irtek-temp.com](mailto:sales@irtek-temp.com) or call +61 (8) 92438849.

For International Sales and Product Information  
email: [sales@irtek-temp.com](mailto:sales@irtek-temp.com)

For Local Service and Technical Support,  
Contact your IRtek Distributor.  
or email: [technical@irtek-temp.com](mailto:technical@irtek-temp.com)

For International Press and Company Information  
email: [publicrelation@irtek-temp.com](mailto:publicrelation@irtek-temp.com)

[www.irtek-temp.com](http://www.irtek-temp.com)



**IRtek**<sup>®</sup>  
No Touch Thermal Solution



Imaging Performance	Field of View	18° Horizontal x 13° Vertical
	Lens	13mm
	Spatial Resolution	1.3mrad
	Optical Resolution	500 : 1
	Thermal Sensitivity / NETD	100mK / 0.1°C at 30°C
	Image Frame Rate	50 Hz / 60 Hz full real time
	Focus	Manual adjust, 30cm (11.8") to infinity
	Detector	160 x 120, Uncooled Microbolometer FPA (ULIS France)
	Spectral Range	8 ~ 14µm
	Measurement	Temperature Range
Accuracy		±2°C or ±2%
Measurement Modes		Four moveable spot, three moveable area displaying max/min/avg, line profile, isothermal band, temperature difference, color alarm
Display Color		11 palettes
Image Adjust		Auto/manual
Setup Functions		Measurement setting, measurement correction, analysis, date & time, local adapt, system information, factory default, network setting
Emissivity Correction		0.10 to 1.00 by 0.01 increments
Environment Temperature Correction		Automatic corrections based on user input
Atmospheric Transmission		Automatic corrections based on user input for ambient temperature, distance, and relative humidity
Image Storage		File Format
	Image Capture	Single frame raw image manual captured via control software, the captured images are analyzable and temperature measurable
Interface	Analog Video Output	PAL/NTSC
	Digital Video Output	RJ-45 Ethernet output, MPEG-4 digital video/raw temperature measured data
	Output	General purpose output
	Network Interface	RJ-45 Ethernet output for thermal image, data transfer, and camera control
Power Source	External Power Supply	12VDC, 550mA
	Power Consumption	< 6 Watt
Environmental	Operating / Storage Temperature	-15 to 50°C (-5 to 122°F) / -40 to 70°C (-40 to 158°F)
	Operating / Storage Humidity	< 90%, non condensing
	Enclosure	IP40
Physical Characteristic	Unit Dimensions	224 x 92 x 82mm
	Unit Weight	800g (without lens)
	Tripod Mounting	¼" - 20
Accessories	Standard Accessories	IR Camera with lens • CD Software • Power Cable • Video Cable • 2m Network Cable • Instruction Manual • Carrying Case & Strap • Warranty Card • Certificate of Product Conformance
	Optional Accessory	High temperature lens 600°C

**IRtek. No Touch Thermal Solution.**

**IRtek International**  
P.O. BOX 435  
Joondalup, W.A. 6919 Australia

**For more information call:**  
Phone : +61 (8) 92438849  
Fax : +61 (8) 94478835  
Email : [sales@irtek-temp.com](mailto:sales@irtek-temp.com)  
Web access : <http://www.irtek-temp.com/>

© 2009 IRtek International  
All rights reserved  
122009B01



Bearing

Power Plant

Computer Board

